

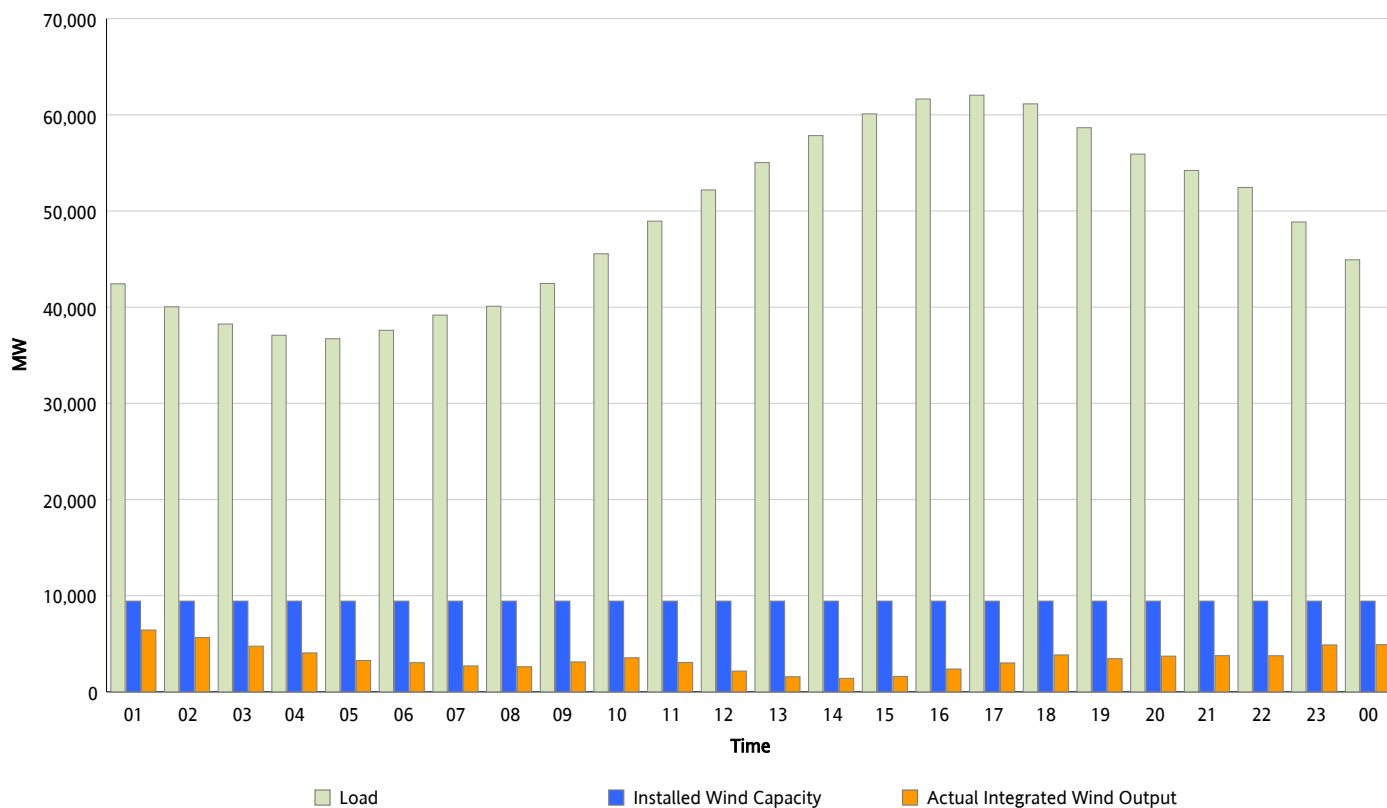


ERCOT Grid Operations

Wind Integration Report : 07/26/2012

Peak Load	62,044 MW
Load Peak Hour (HE)	17
Wind Over Peak	3,008 MW
Wind Record 06/19/12	8,368 MW
Max Wind Value*	6,613 MW
Wind Peak Time	00:30
Wind Integration %	15.59 %

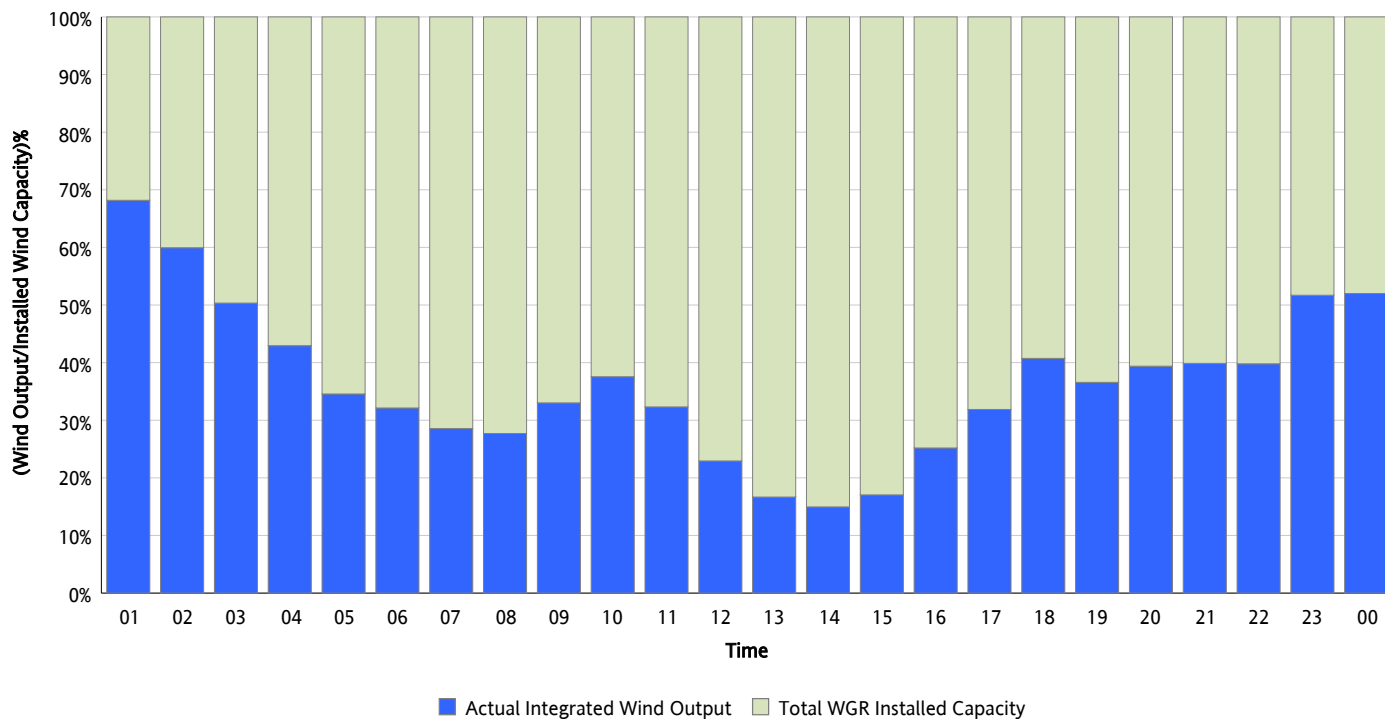
Hourly Average Actual Load vs. Actual Wind Output
07/26/2012



* Wind Record and Wind Max represent instantaneous values and the rest of the values are integrated over the hour

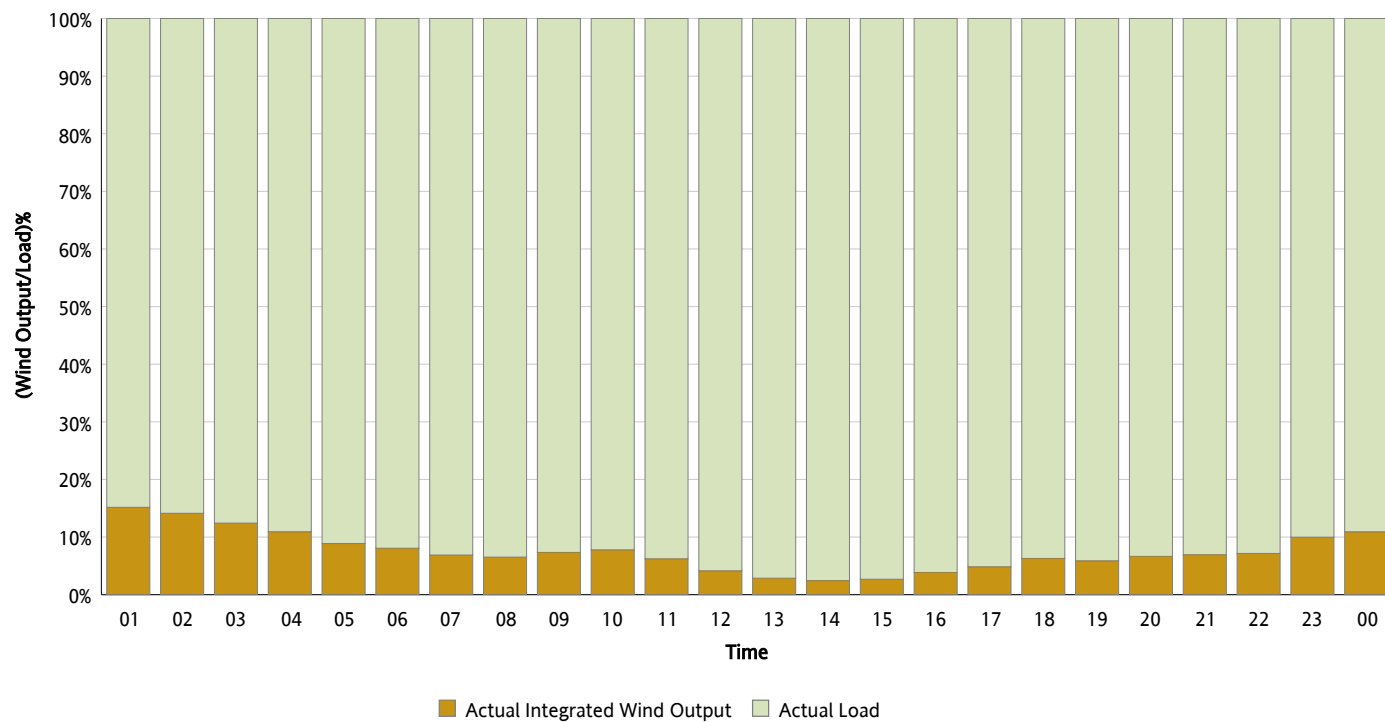
Actual Wind Output as a Percentage of the Total Installed Wind Capacity

07/26/2012



Actual Wind Output as a Percentage of the ERCOT Load

07/26/2012



ERCOT Load vs. Actual Wind Output

07/19/2012 - 07/26/2012

